

# OVER 3.2 GW SOLD

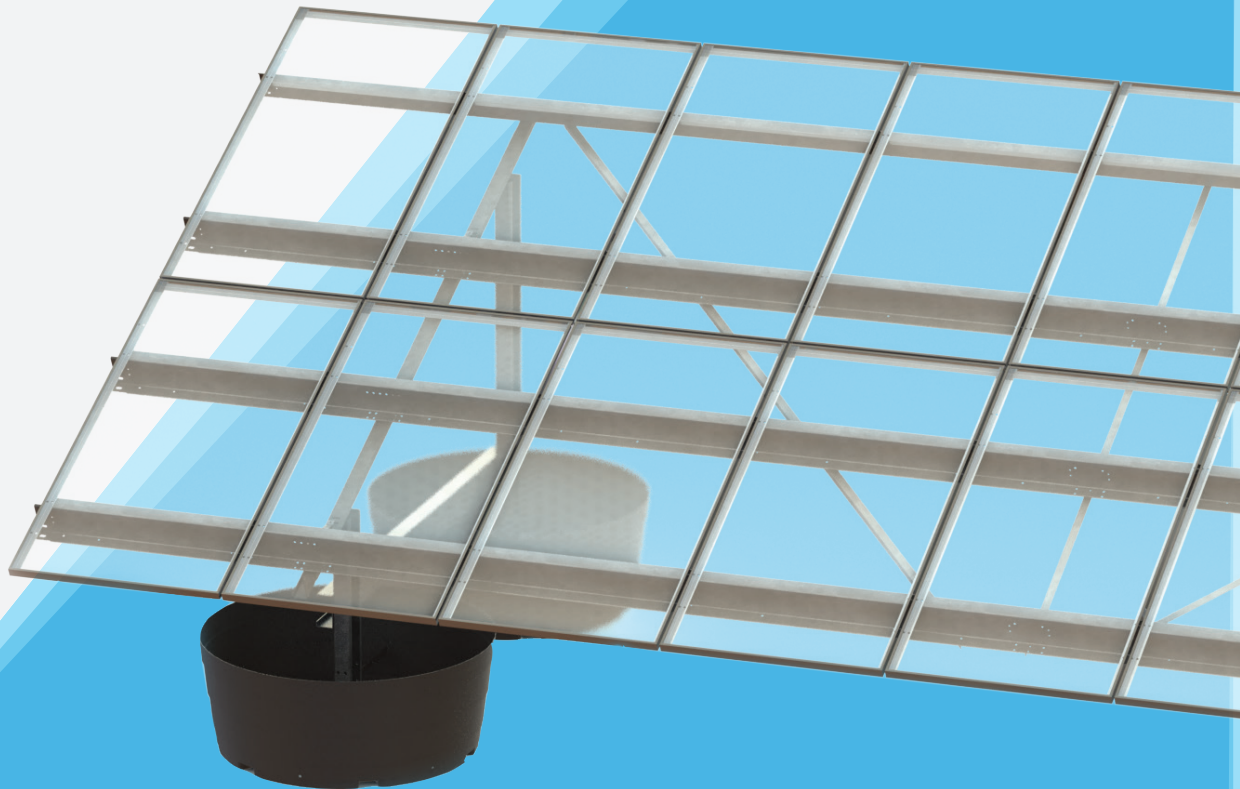
Every System For Your Every Need



## POUR-IN-PLACE™ BALLASTED GROUND SYSTEM

LANDFILL LEADER & BEST SOLUTION  
FOR ROCKY SITES

### TECHNICAL DATASHEET



### Place

Leave behind Tubs

### Build

Self leveling racking

### Pour

Standard Concrete

## WHY FIGHT ROCKY GROUND WITH PILES OR SCREWS?

**68% FASTER**  
THAN PRECAST  
**MINIMAL IMPACT**  
ON DRAINAGE

#### POUR-IN-PLACE™ BALLASTED GROUND SYSTEM

- ✓ Complete your site on time and on budget
- ✓ Peace of mind with risk-free install
- ✓ Up to 20% lower install racking cost than screw or pile systems

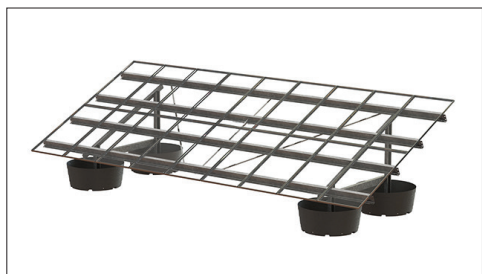
#### SCREW OR PILE SYSTEMS

- ✗ Slow drilling needed for every hole
- ✗ Slow and uncertain install timeline and budget
- ✗ Up to 25% higher install racking cost for screw or pile systems

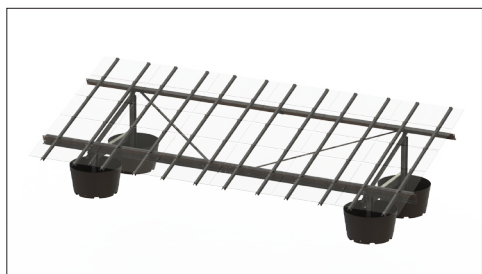


# OVER 3.2 GW SOLD

Every System For Your Every Need



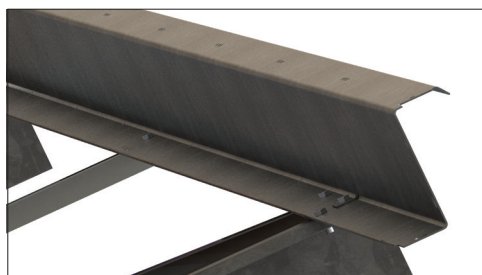
Pour-in-Place™ Ballasted Ground System has self-leveling technology which enables fast install



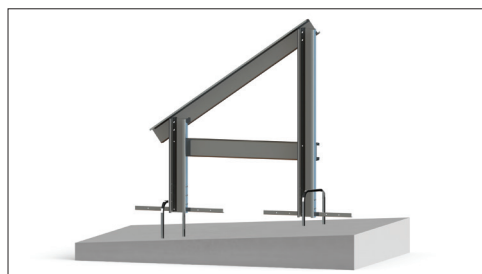
Pour-in-Place™ thin film panel clamps mount using T bolts or socket head bolts



Slots combine with rail support self-leveling technology enables up to 7" [18 cm] vertical adjustment



Galvanized purlins with large wire management tray available



Large hoop-shaped brackets slide to enable over 7" [18 cm] of vertical adjustment to facilitate install on ground sloping in all directions

**\*Disclaimer:** GameChange Solar provides this documentation without warranty in any form either expressed or implied. GameChange Solar may revise this document at any time without notice.

## Features

Pour-in-Place™ Ballasted Ground System: less concrete, faster install, steeper slopes

Substantial adjustability allows for slopes up to 15%

Self-leveling technology enables up to 7" [18 cm] total vertical adjustability including use of slots

No gravel beds or other expensive ground preparations required for leveling as needed for precast - save up to \$.05/watt

Up to 4 ft. [122 cm] high ground clearance to allow for snow and vegetation

5° to 35° tilt with multiple inter-row spacing options

Full layout and engineering analysis for every project

Integrated grounding and wire management

## Test & Certification

- Wind tunnel tested by industry leader CPP& rated for 175 mph [78 m/s] wind speed
- Independent assessment by Black & Veatch
- Rated up to 90 psf [4.3kPa] snow load
- ETL / UL 2703 tested (similar to the relevant sections of IEC 61215 & 61730)
- Meets IBC and ASCE standards for structural loading
- Warranty 20 years

## Calculations

- 100% code compliant designs for any jurisdiction
- Structural PE stamped drawings and calculations
- Individual system structural calculations
- Design loads according to IBC 2006 or 2009

## Material

- Rail support structure components: G90+ galvanized steel
- Module mounting rails: G90+ galvanized steel (aluminum also available)
- HMWPE forms
- Magnacoat bolts and serrated flange nuts for structural member connections
- Module mounting hardware top mount: module mounting clips: stainless steel  
FTZ / UL 467 teathed clips, T bolts, serrated flange nuts: stainless steel  
bottom mount: hex bolts, serrated flange nuts, star washers: stainless steel
- Integrated grounding with star washers or teathed module clamps included - both approved under ETL / UL 2703, (similar to the relevant sections of IEC 61215 & 61730)
- Grounding must be done by electrician at row ends

### GameChange Solar

152 W 57 Street 17FL New York, NY 10019

Email: [info@gamechangesolar.com](mailto:info@gamechangesolar.com)

Phone: 212-388-5160

Fax: 646-607-2223